

Passthru 9X

: SnSFW

: 2002-08-01

1. Passthru 9x


```
    UINT Signature; // 'NBUF'  
} NDIS_BUFFER;
```

5) Intermediate Driver Differences

- Windows ProtocolChar.UnloadHandler
 - XP NCF_NDIS_PROTOCOL
 - IM Protocol NetTrans가 NetService
- Windows 2000/XP INF
 - Miniport : Class = Net
 - Protocol : Class = NetService (filter driver)
 - Protocol : Class = NetTrans (MUX driver)
- Windows 9x/ME INF
 - Miniport Protocol NetTrans
 - Miniport HKR,,RealClass,,Net

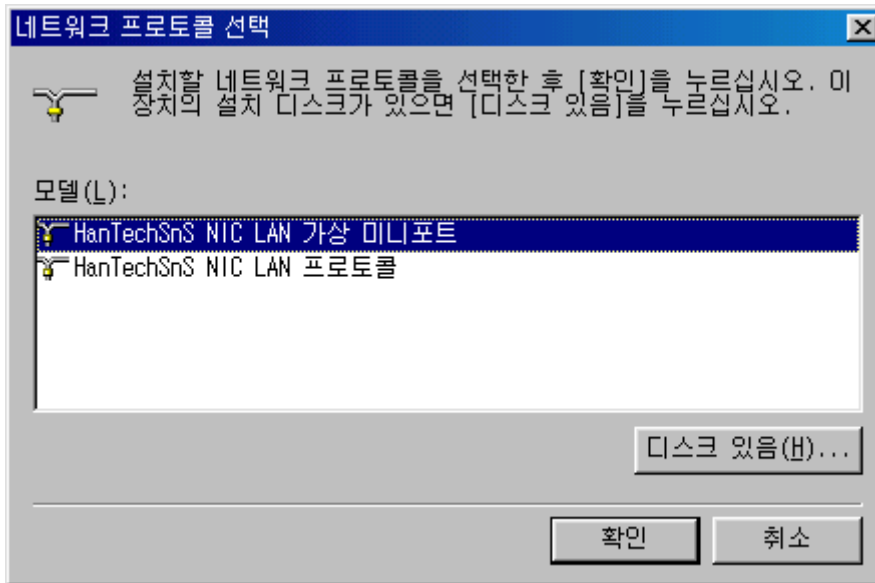
5) INF

- Windows 9x/ME:

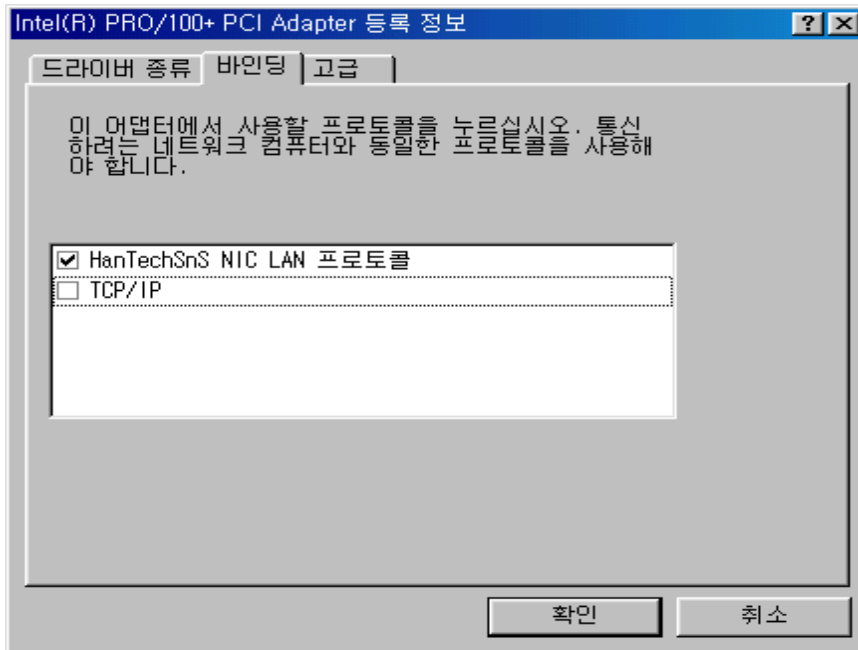
```
[MYDRIVER.AddReg]  
HKR,,DevLoader,,*ndis,*ntkern  
HKR,,DeviceVxDs,,MyDriver.SYS  
NT/2000/XP:  
[MYDRIVER_Inst_Service]  
ServiceType = 1 ;SERVICE_KERNEL_DRIVER  
StartType = 3 ;SERVICE_MANUAL_START  
ErrorControl = 1 ;SERVICE_ERROR_NORMAL  
ServiceBinary = MyDriver.SYS  
LoadOrderGroup = NDIS7)
```
- MPSEND, MPSENDPACKETS

```
#ifdef WIN9X  
    // Work around the fact that NDIS does not initialize this  
    // to FALSE on Win9x.  
    MyPacket->Private.ValidCounts = FALSE;  
#endif  
#ifndef WIN9X  
    // Copy the right parts of per packet info into the new packet.  
    // This API is not available on Win9x since task offload is  
    // not supported on that platform.
```


(3) HanTechSnS NIC LAN 가



(4) TCP/IP



(5)

