

**SnSFWNAT**

**HanTechSnS**

---

*HanTechSnS*

1.

2.

3. Ethernet

4. ADSL

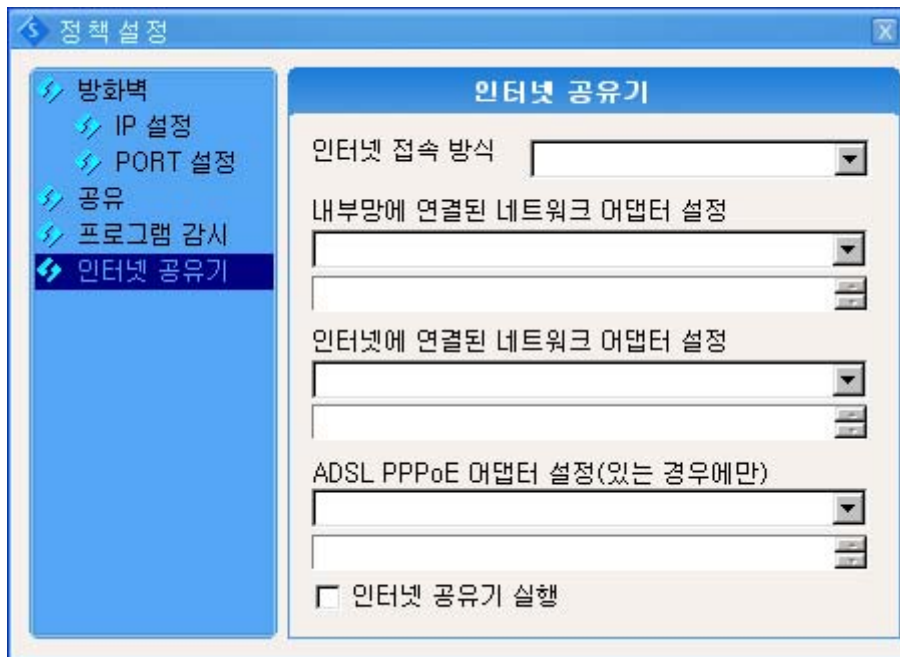
5. NAT

6.

1.

: Windows 95/OSR2/98/98SE/ME/2KPro/XP  
: Ethernet , ADSL(PPPoE), Cable

2.

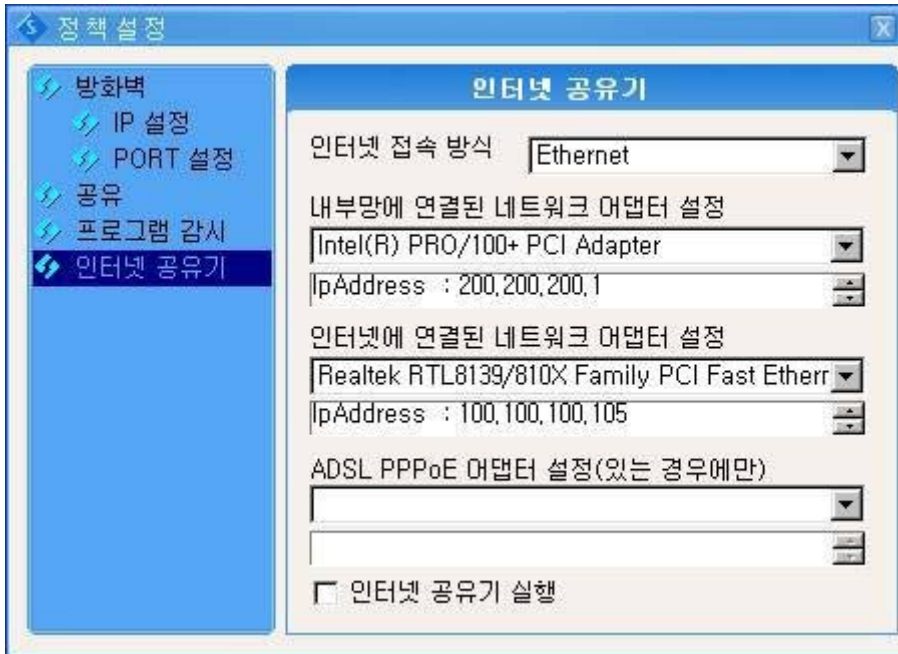


: Ethernet, ADSL  
:  
:

ADSL PPPoE : ADSL

ADSL ADSL 가

### 3. Ethernet

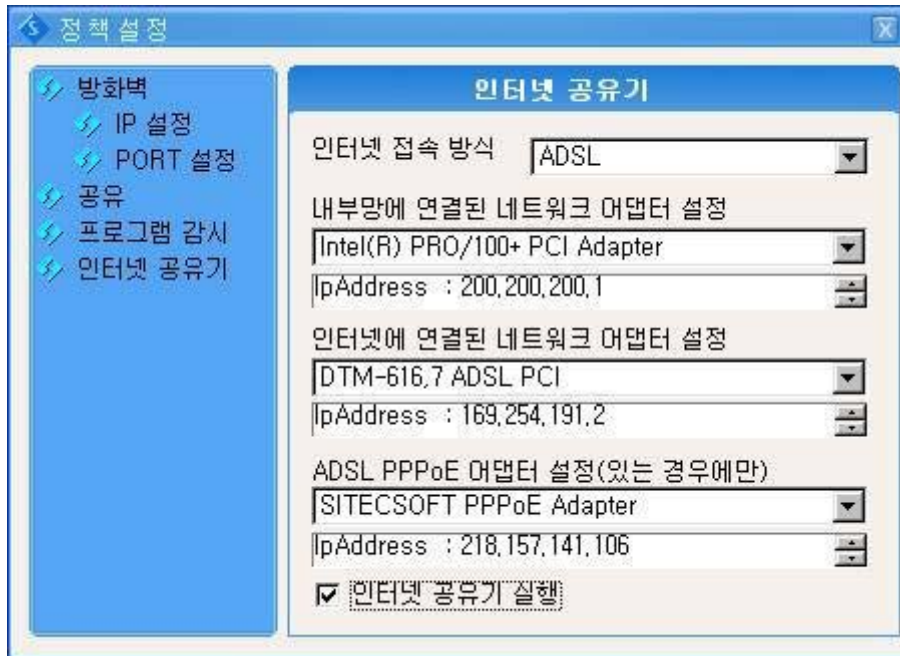


- ◆ “ ” IP , 가
- ◆ “ ” IP , ,
- ◆ 가
- ◆ IP, ,
- TCP/IP TCP/IP

## 4. ADSL

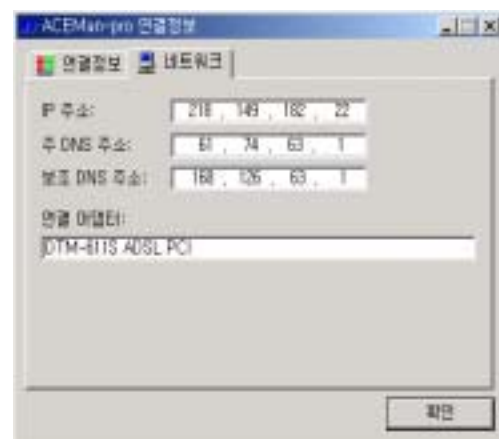
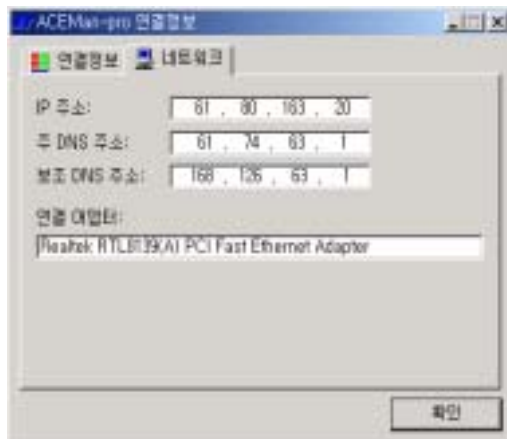
ADSL , 가 PPPoE ,

AceMan-Pro 2.2



“ ” AceMan-Pro

(ADSL LAN 가 , ADSL  
ADSL 가 .)



“ADSL PPPoE ”

AceMan-Pro

SITECSOFT PPPoE Adapter

- ◆ “ ” IP , 가
- ◆ “ ” IP , , 가
- ◆ “ADSL PPPoE ” IP , , 가
- ◆ ADSL ADSL PPPoE IP , ,  
ADSL  
ADSL

## 5. NAT

NAT MTU  
ADSL . ADSL MTU  
가 .

NAT 환경 설정		
TCP ■■■ 유지 시간	<input type="text" value="3600"/>	분
UDP, ICMP ■■■ 유지 시간	<input type="text" value="1"/>	분
최대 세그먼트 크기(ADSL인 경우)	<input type="text" value="1414"/>	바이트
<input type="button" value="확인"/>		

6.

NAT 맵핑 정보

맵핑 테이블 새로고침

No.	프로토콜	내부망 IP:PORT	외부망 IP:PORT
1	UDP	200,200,200,3 : 1029	61,74,63,1 : 53
2	UDP	200,200,200,3 : 1034	61,74,63,1 : 53
3	UDP	200,200,200,3 : 1036	61,74,63,1 : 53
4	UDP	200,200,200,3 : 1038	61,74,63,1 : 53
5	UDP	200,200,200,3 : 1040	61,74,63,1 : 53
6	TCP	200,200,200,3 : 1041	211,233,79,122 : 80
7	TCP	200,200,200,3 : 1042	211,233,79,122 : 80
8	TCP	200,200,200,3 : 1043	211,233,79,122 : 80
9	TCP	200,200,200,3 : 1044	211,233,79,122 : 80
10	UDP	200,200,200,3 : 1045	61,74,63,1 : 53
11	UDP	200,200,200,3 : 1049	61,74,63,1 : 53
12	TCP	200,200,200,3 : 1037	211,32,119,143 : 80
13	TCP	200,200,200,3 : 1046	211,233,28,246 : 80

닫힘